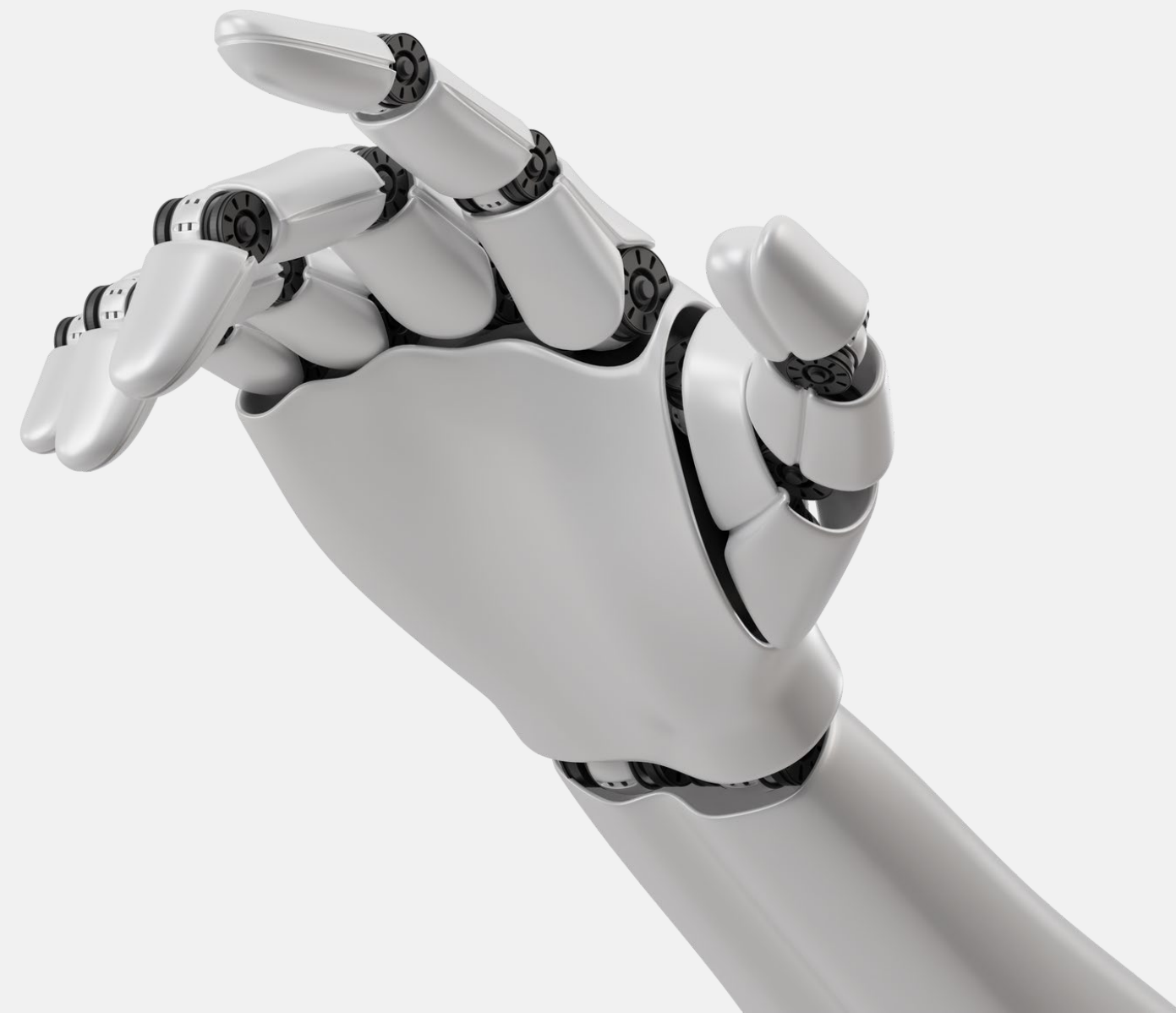
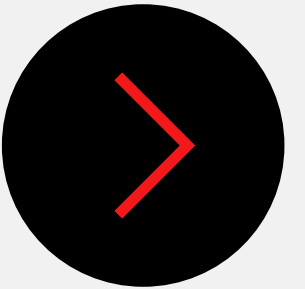


Artificial Intelligence Overview





You already
met AI today 
Fun Fact

8:00 AM | **Wake Up Alarm**

8:30 AM | **Checking the Weather**

9:00 AM | **Social Media Scroll**

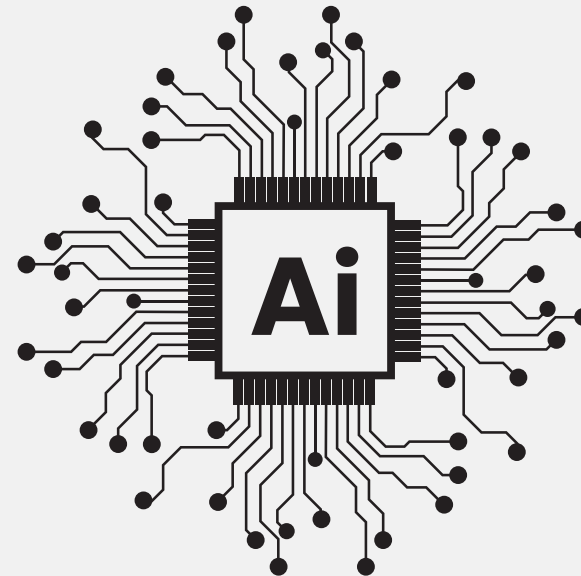
9:30 AM | **Google Maps to Huawei Office**

10:00 AM | **You Took a Selfie**

10:30 AM | **You “GPTed” Something**



What is Artificial Intelligence?



Home

Artificial Intelligence

Machine Learning

Deep Learning

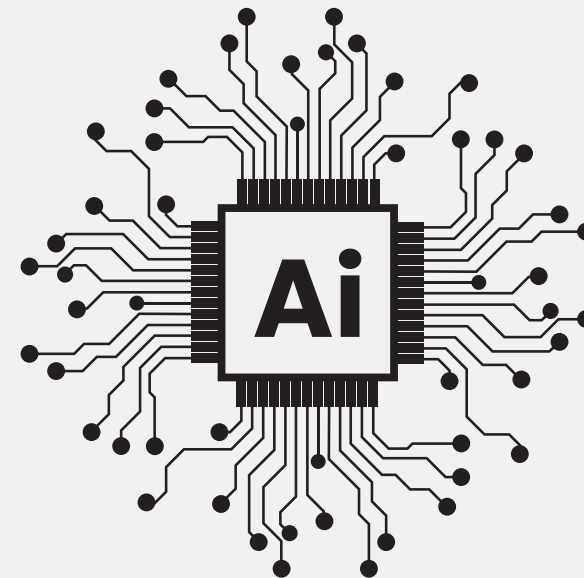
Huawei's Role



Machine Learning

Deep Learning

What is Artificial Intelligence?



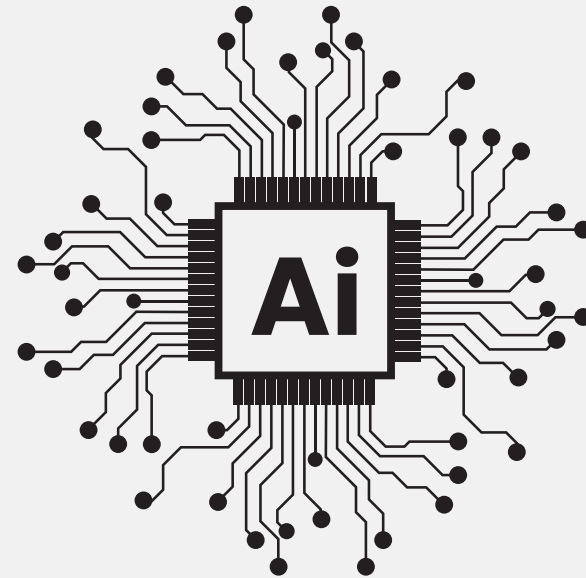


Machine Learning

Computer Vision

Deep Learning

What is Artificial Intelligence?





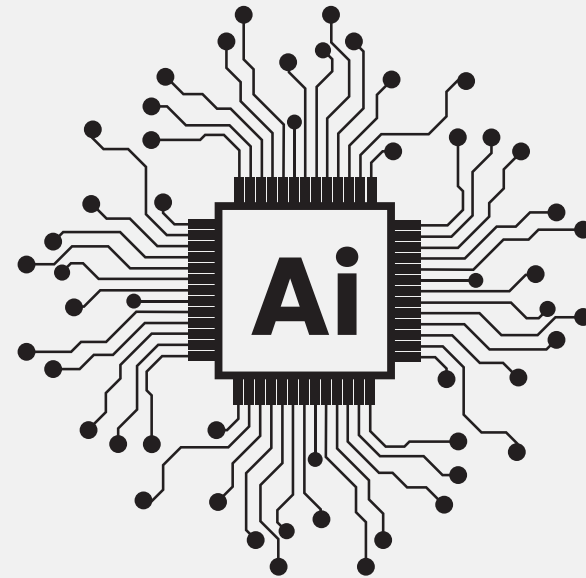
Machine Learning

Computer Vision

What is Artificial Intelligence?

Deep Learning

Generative AI





Machine Learning

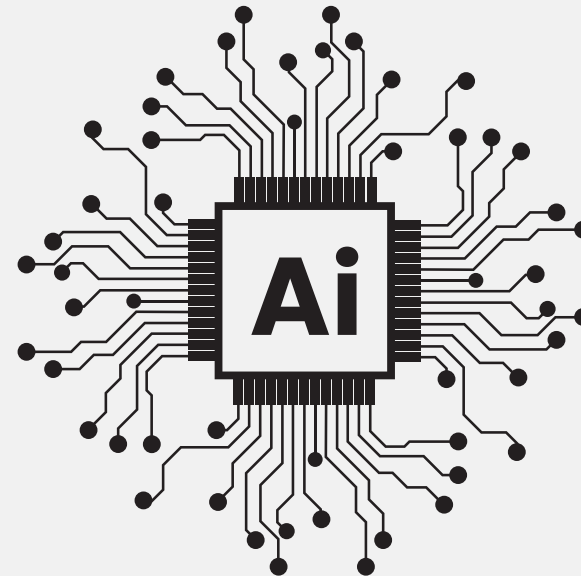
Computer Vision

Reinforcement Learning

Deep Learning

Generative AI

What is Artificial Intelligence?





Machine Learning

Computer Vision

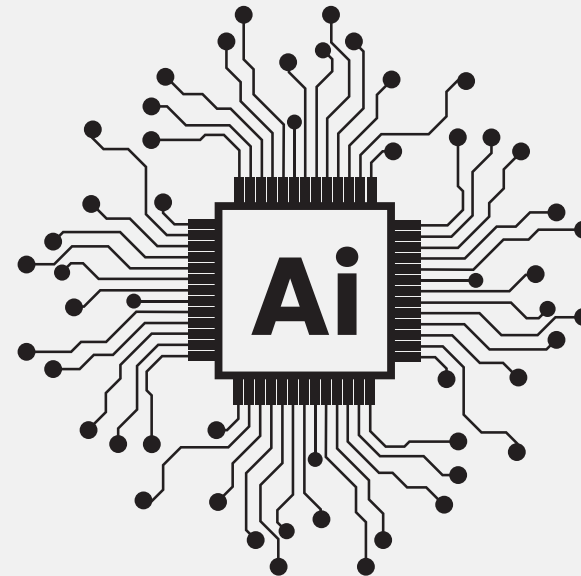
Reinforcement Learning

Robotics

Deep Learning

Generative AI

What is Artificial Intelligence?





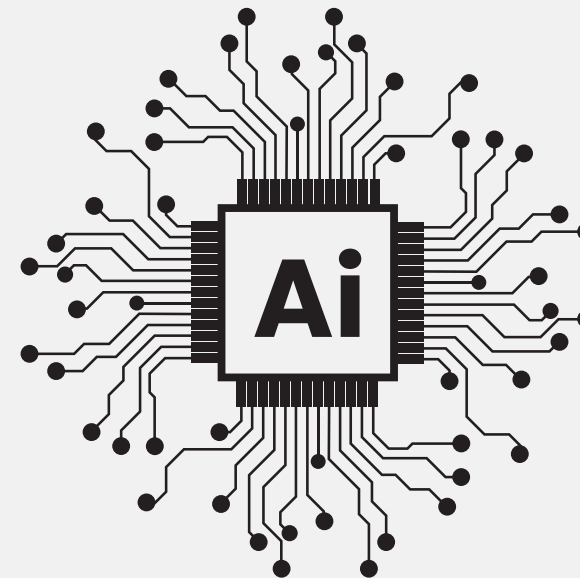
Machine Learning

Computer Vision

Reinforcement Learning

Robotics

What is Artificial Intelligence?



Deep Learning

Generative AI

Natural Language Processing



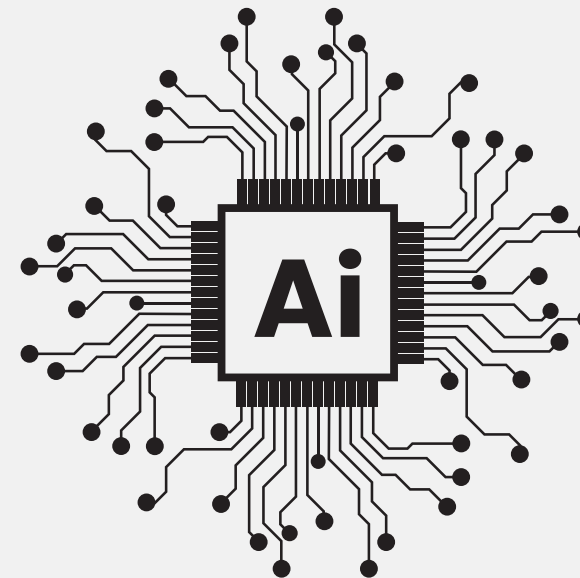
Machine Learning

Computer Vision

Reinforcement Learning

Robotics

What is Artificial Intelligence?



Deep Learning

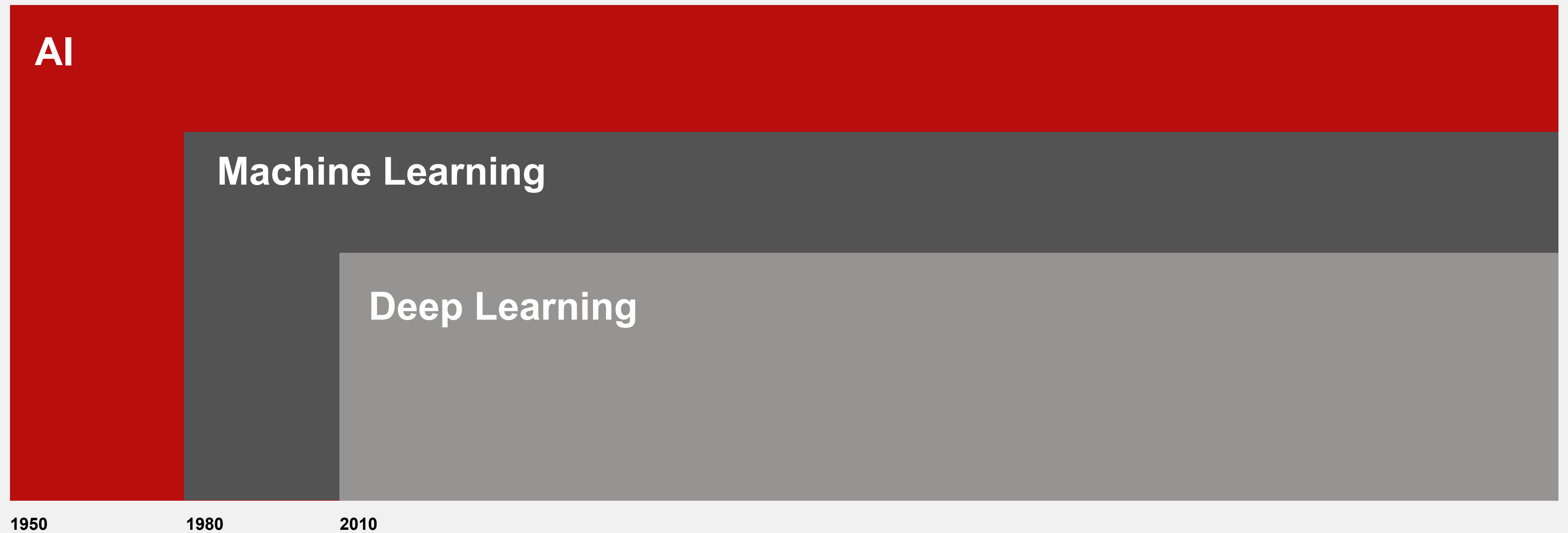
Generative AI

Natural Language Processing

Large Language Models



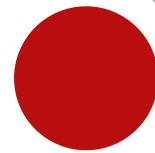
Relationship between AI, Machine Learning and Deep Learning





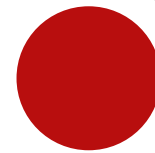
Major Schools of AI

Symbolism



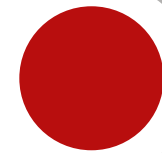
AI that thinks using
logic and rules

Connectionism



AI that learns like
the human brain

Actionism



AI that learns by
interacting with the world



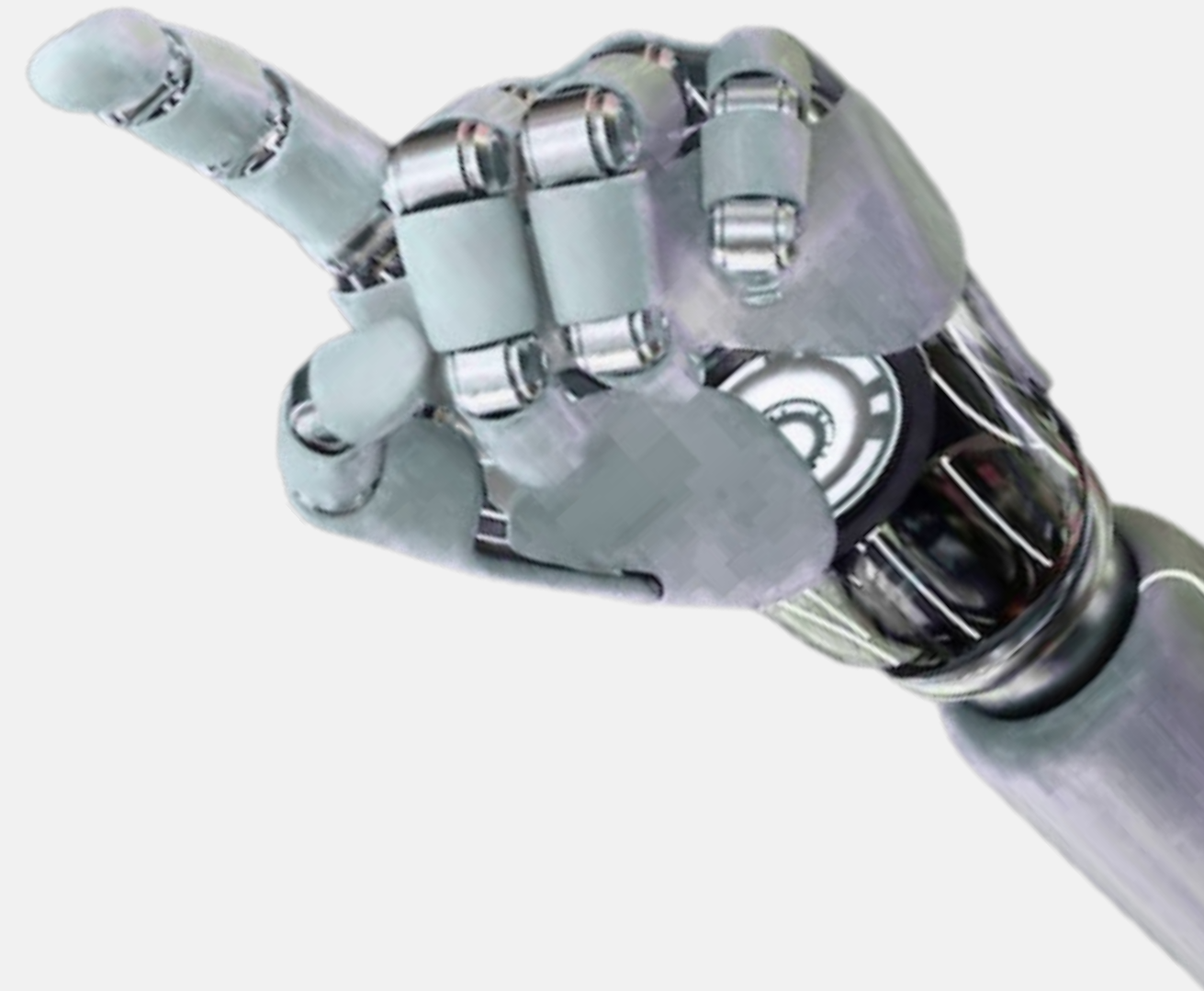
Types of AI

Strong AI

Machines that replicate human functioning, such as reasoning and problem solving.

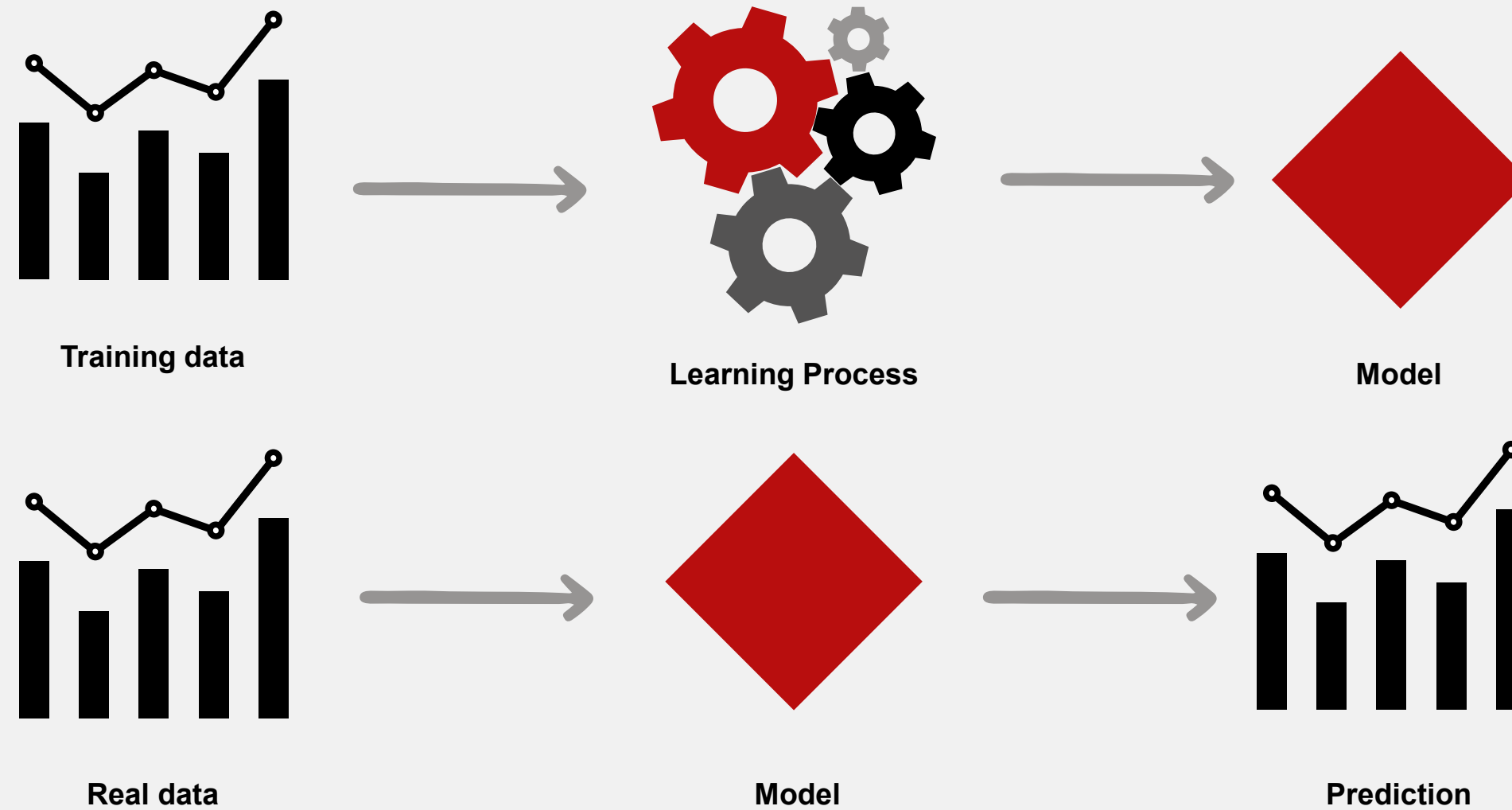
Weak AI

Machines that perform specific tasks, but rely heavily on human interference.





What is Machine Learning?

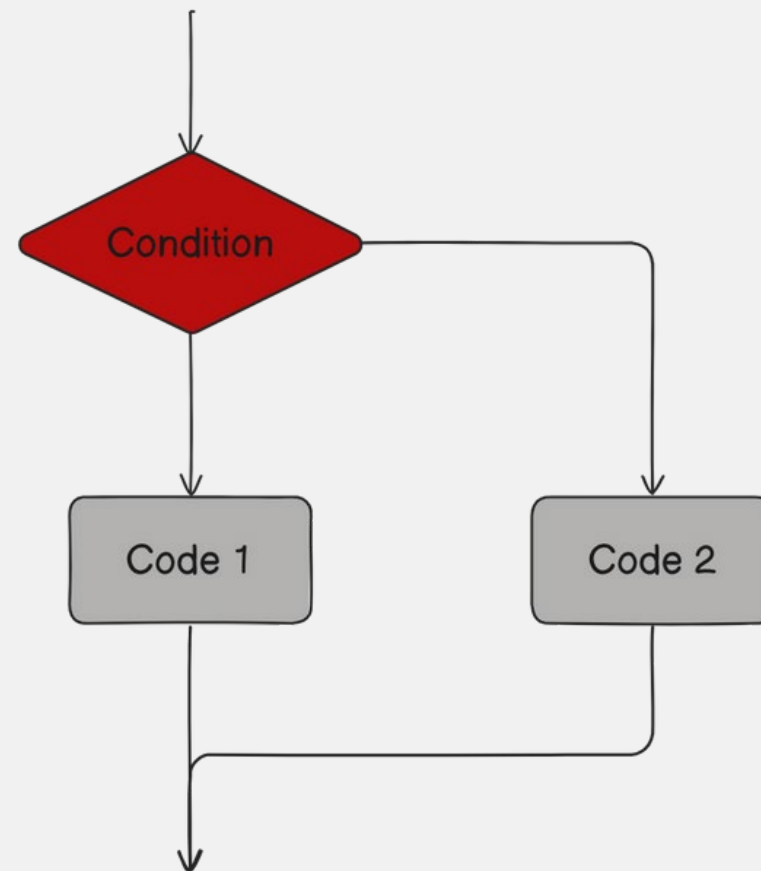




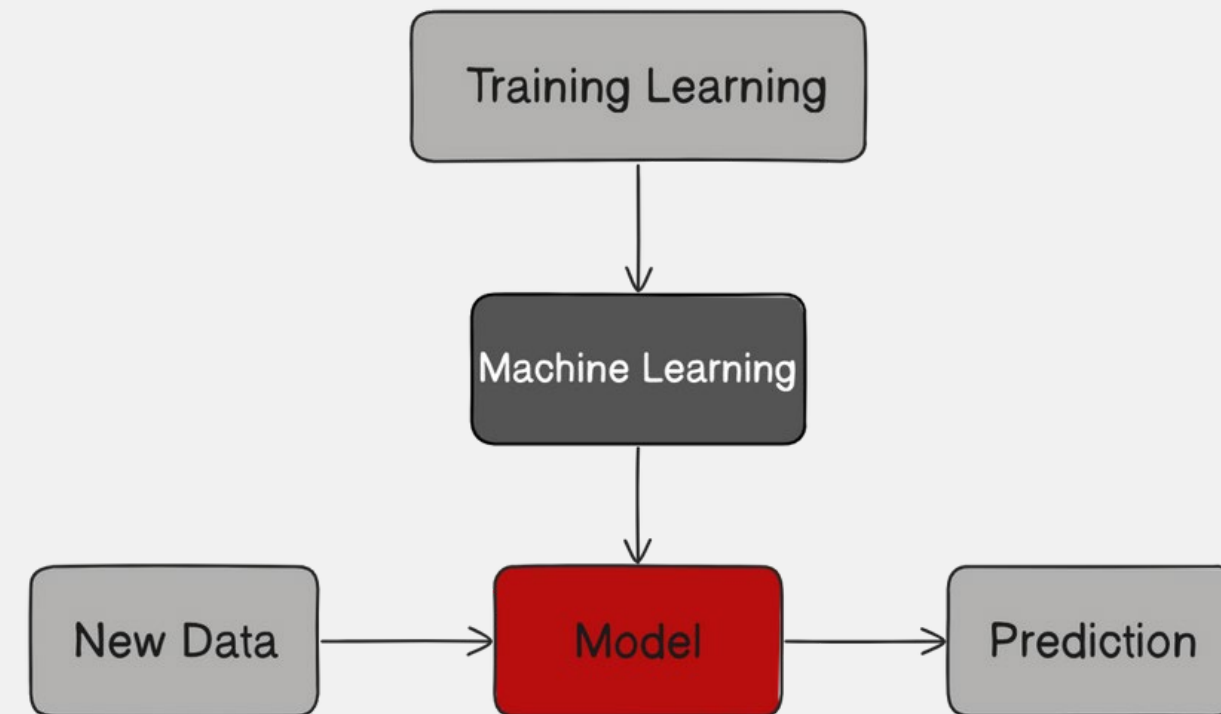
Wait a minute...

Is Machine Learning always the right answer?

Rule-based Method



Machine Learning





Types of Machine Learning

Supervised Learning

The model learns from labeled data to make predictions or classifications

Unsupervised Learning

The model finds patterns and groups in data without any labels

Semi-supervised Learning

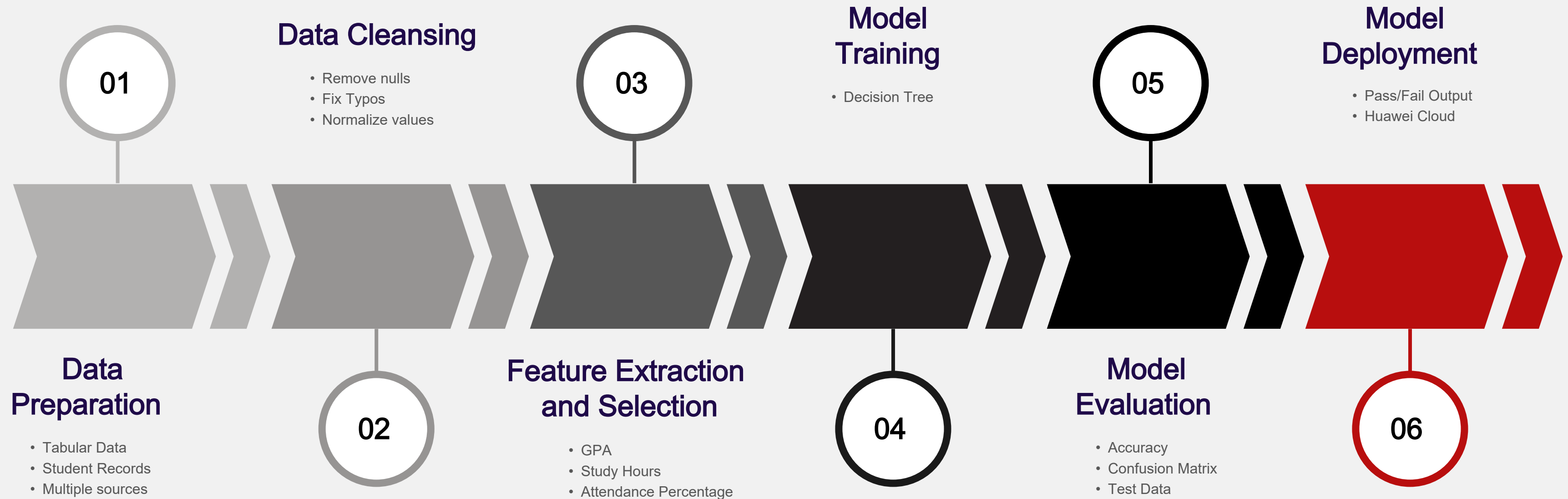
The model learns from a small amount of labeled data combined with a large amount of unlabeled data

Reinforcement Learning

The model learns by interacting with an environment and receiving rewards or penalties for its actions

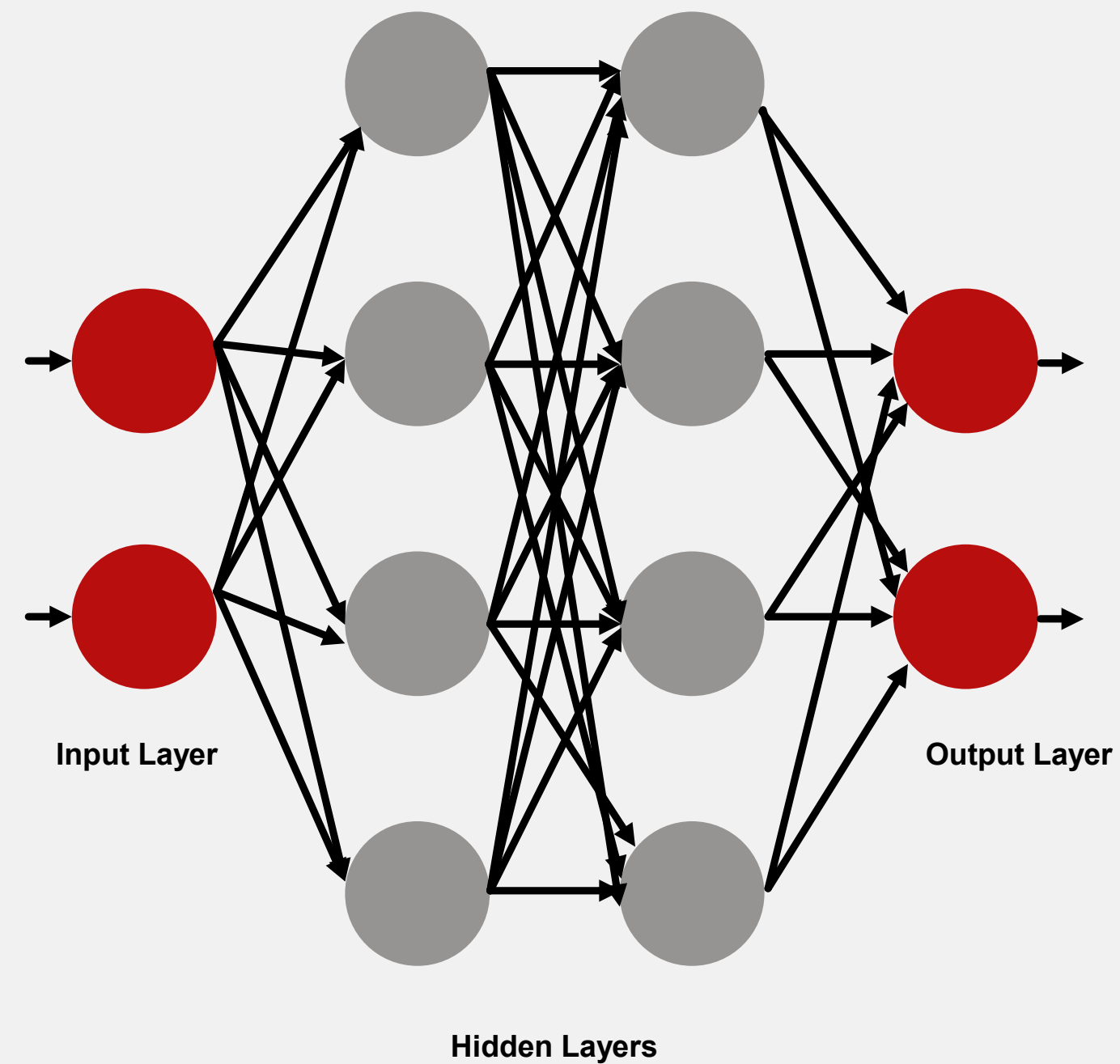


Machine Learning Process





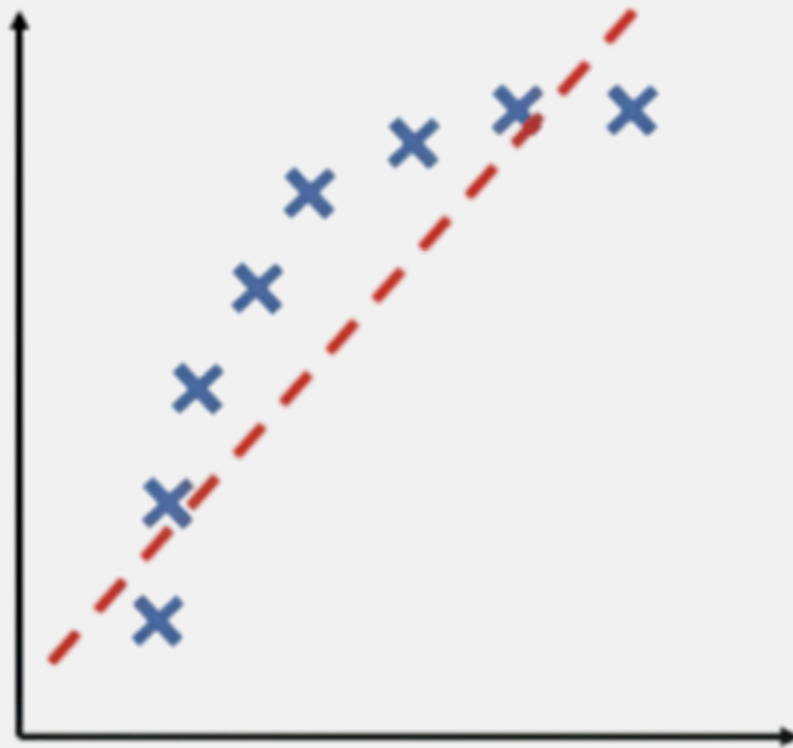
What is Deep Learning?





The other side of AI...

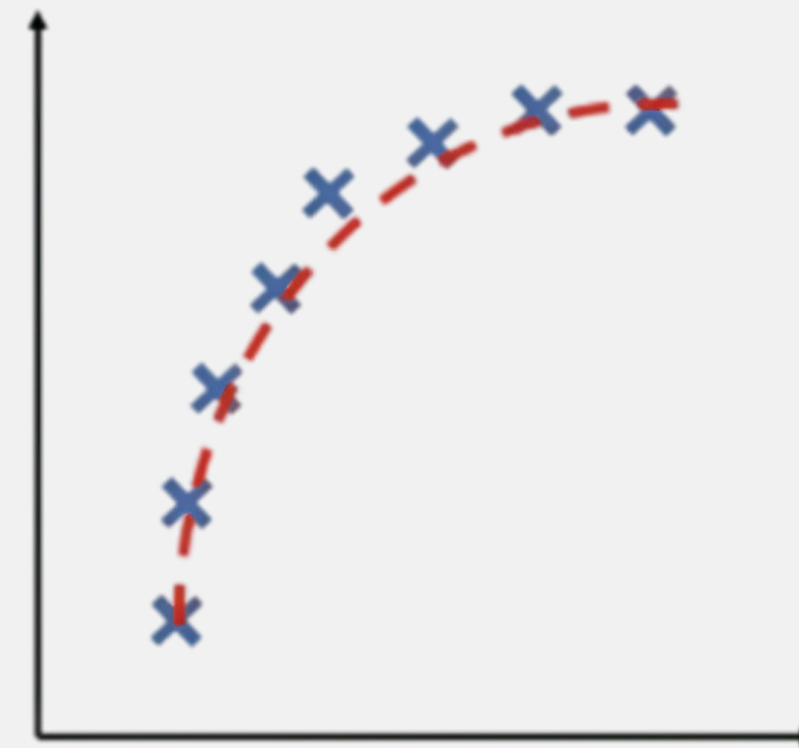
Underfitting



Overfitting

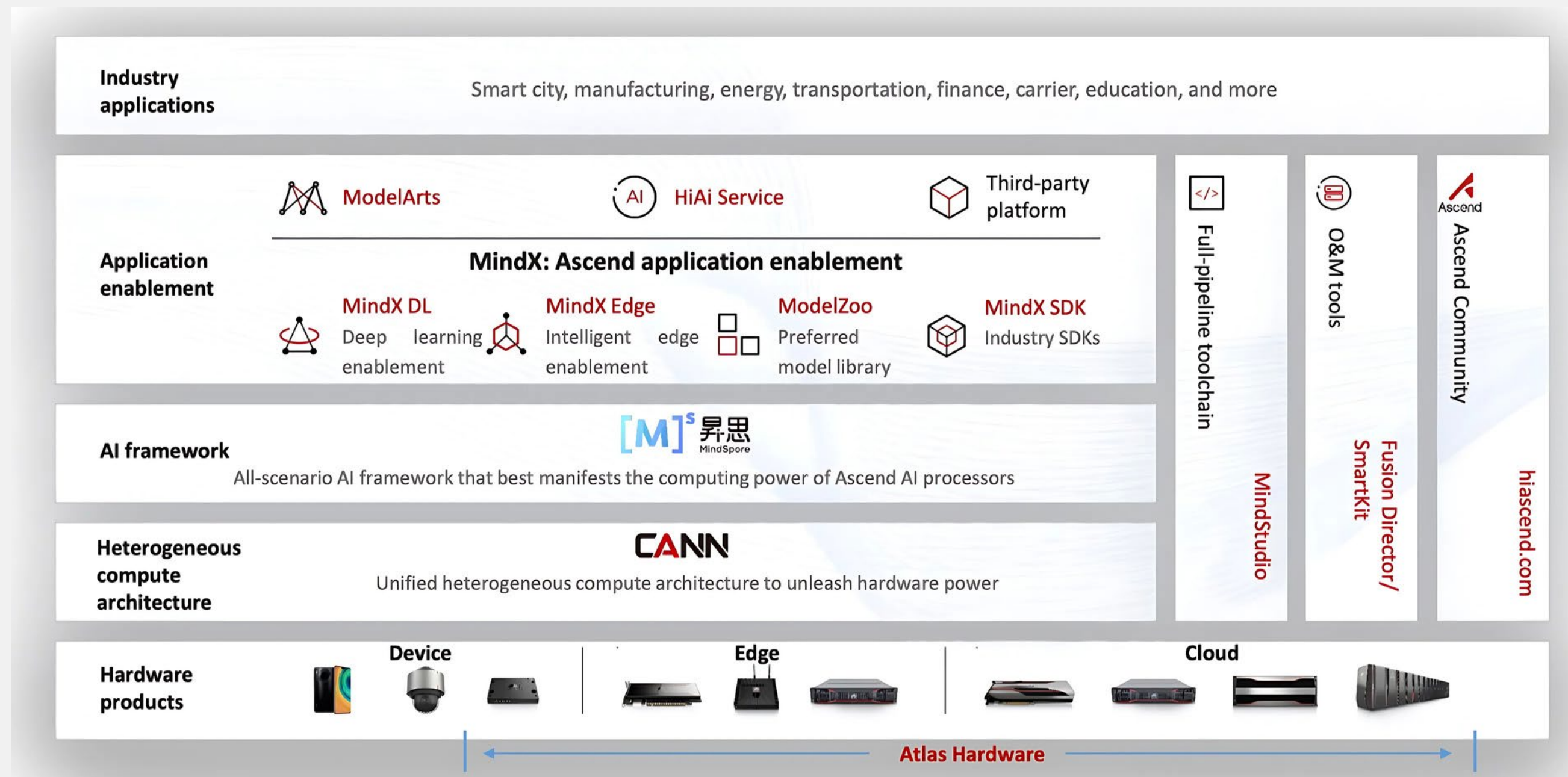


Ideal Balance

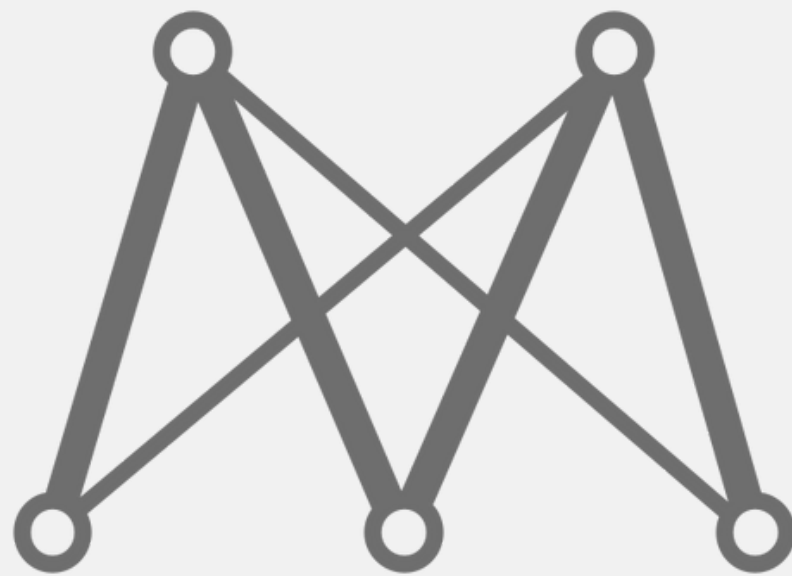




Huawei Full-Stack All-Scenario AI Solution



ModelArts Live Demo



Thank you.